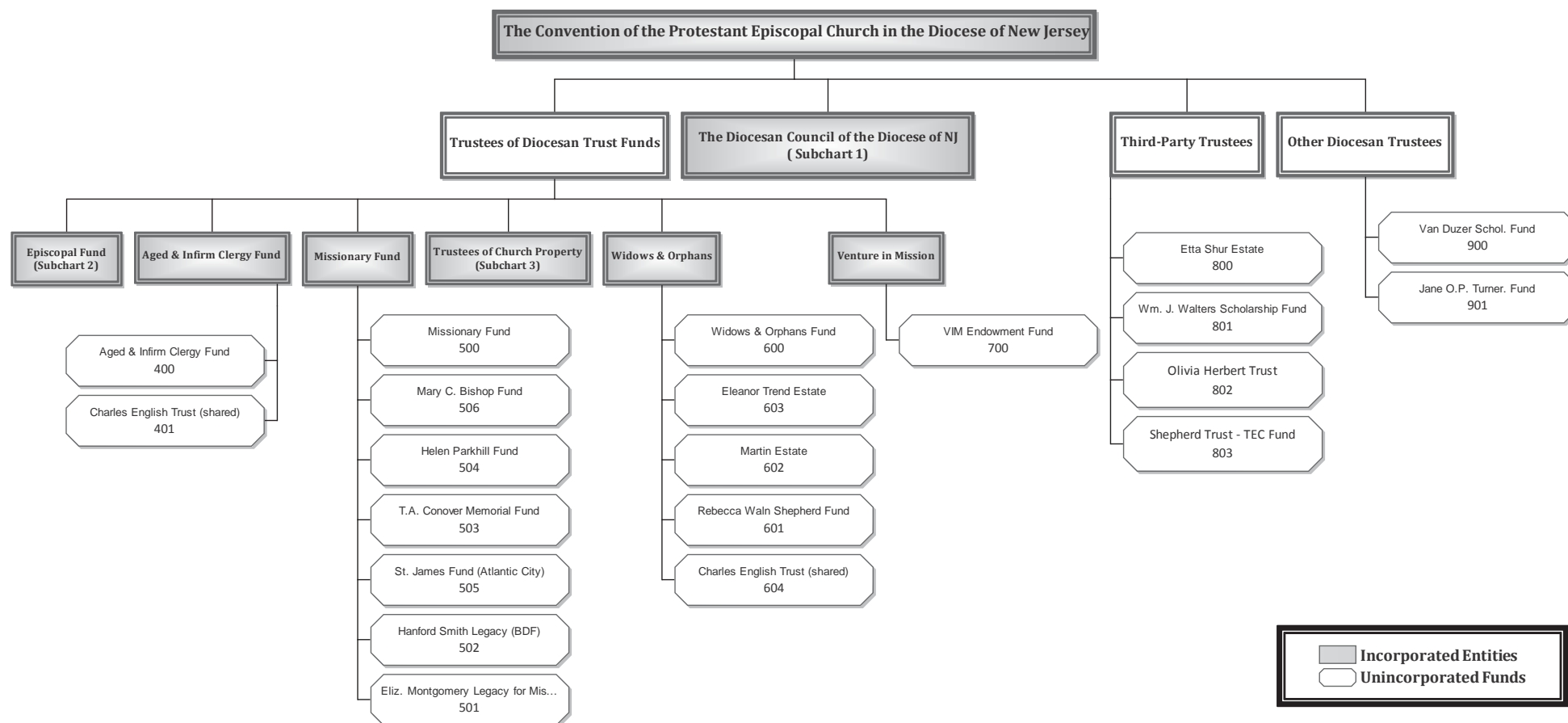


## Episcopal Diocese of New Jersey Corporate and Fund Structure - Report to the 229th Convention

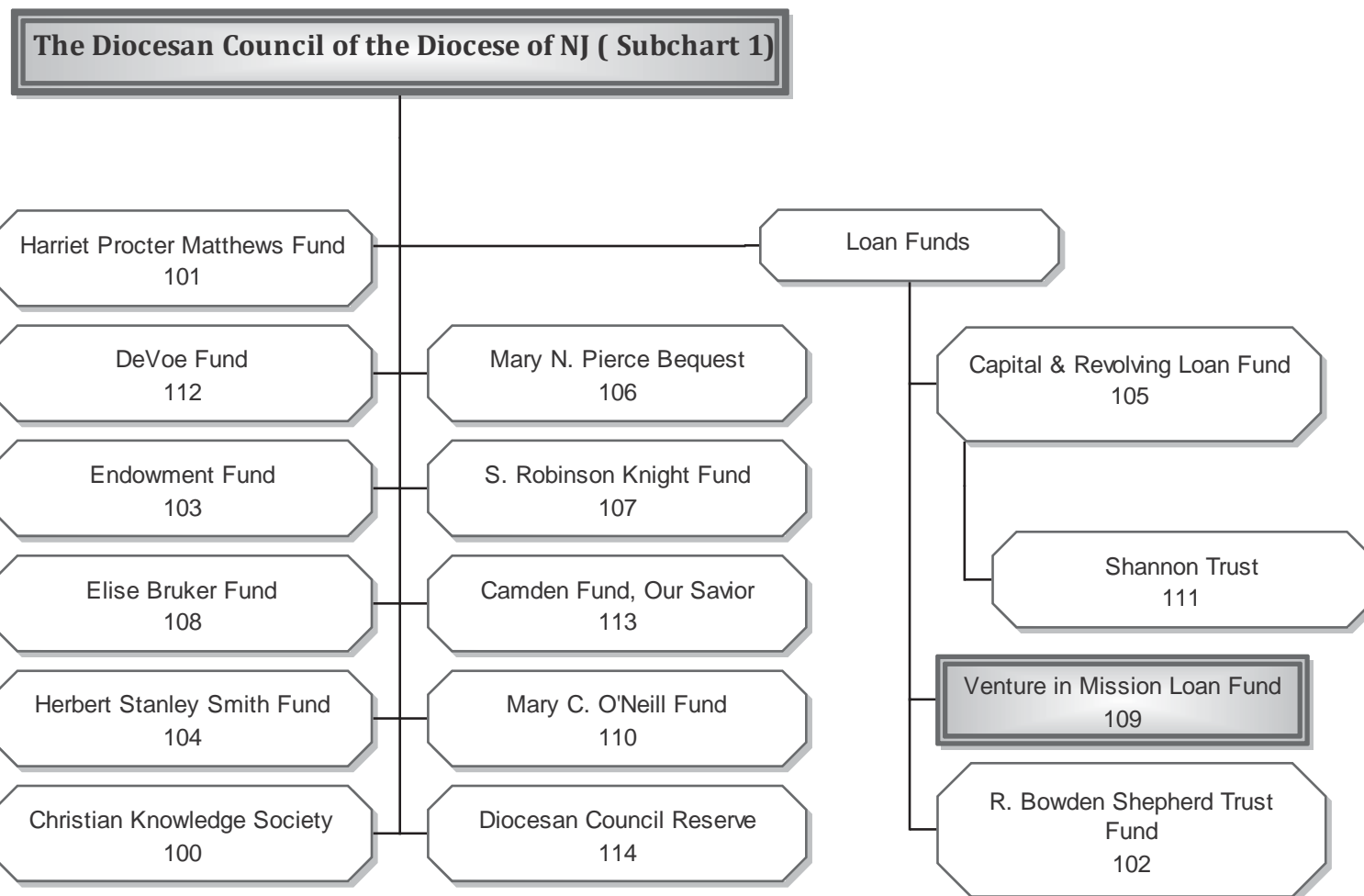


Date Issued: 02-25-13  
 Note: BDF = Bishop's Discretionary Fund  
 Page 1 of 4

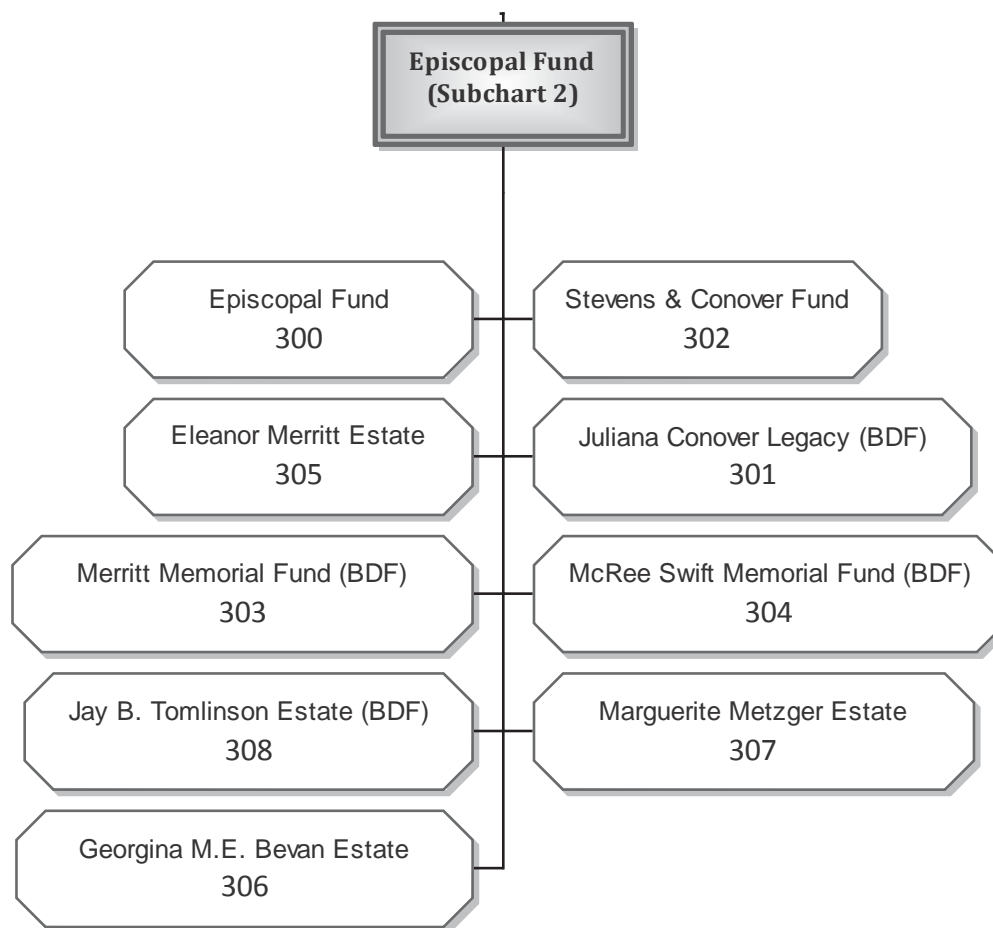
Full Legal Names of Incorporated Entities where abbreviated above are as follows:  
 The Trustees of the Episcopal Fund of the Diocese of New Jersey  
 The Trustees of the Aged and Infirm Clergy Fund of the Diocese of New Jersey  
 The Trustees of the Missionary Fund of the Diocese of New Jersey  
 The Trustees of Church Property of the Diocese of New Jersey  
 The Trustees of the Widows and Orphans of Clergy Fund of the Diocese of New Jersey  
 The Trustees of the Venture in Mission Endowment Fund of the Diocese of New Jersey  
 The Trustees of the Venture in Mission Loan Fund of the Diocese of New Jersey

**Exhibit XII**

**Episcopal Diocese of New Jersey**  
**Subchart 1 - Diocesan Council**  
**Corporate and Fund Structure - Report to the 229th Convention**



**Episcopal Diocese of New Jersey  
Subchart 2 - Trustees of the Episcopal Fund  
Corporate and Fund Structure - Report to the 229th Convention**



Date Issued: 02-25-13

Note: BDF = Bishop's Discretionary Fund

**Episcopal Diocese of New Jersey**  
**Subchart 3 - Trustees of Church Property**  
**Corporate and Fund Structure - Report to the 229th Convention**

**Exhibit XII**

